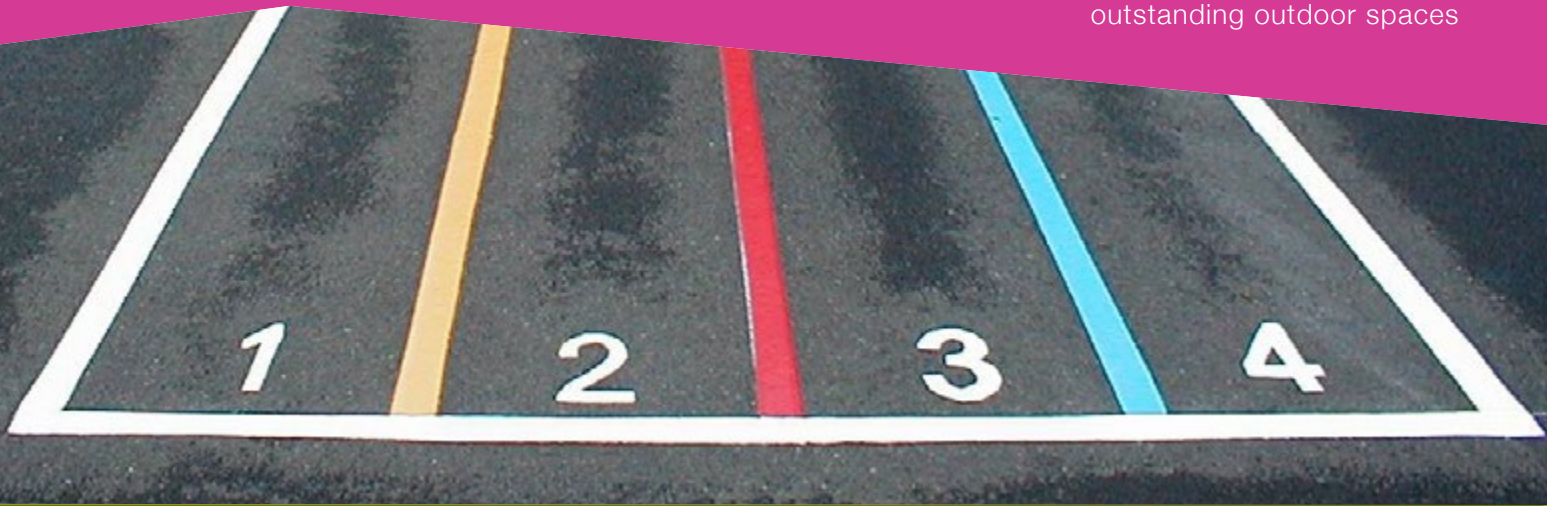




PE & Sport  
Advice Guides

Part 3 - Other funding sources for sport projects



## Part 3 - Other funding sources for sports project

The Youth Sport Trust got it right when they said:

Training for teachers, more varied activities, and new equipment to get classes moving are helping to usher in a 'once in a generation' transformation of PE in primary schools.

In addition to the Primary PE and Sport Premium there are further funding programmes and grants available, specifically focused on improving health and fitness, that you can use to improve your outdoor space. Here's a quick snapshot:

### The Healthy Pupils Capital Programme

The healthy pupils capital programme funding should be available in 2018 to 2019. All state-funded primary, secondary and sixth-form schools in England should be eligible to receive funding through one of two mechanisms, as follows:

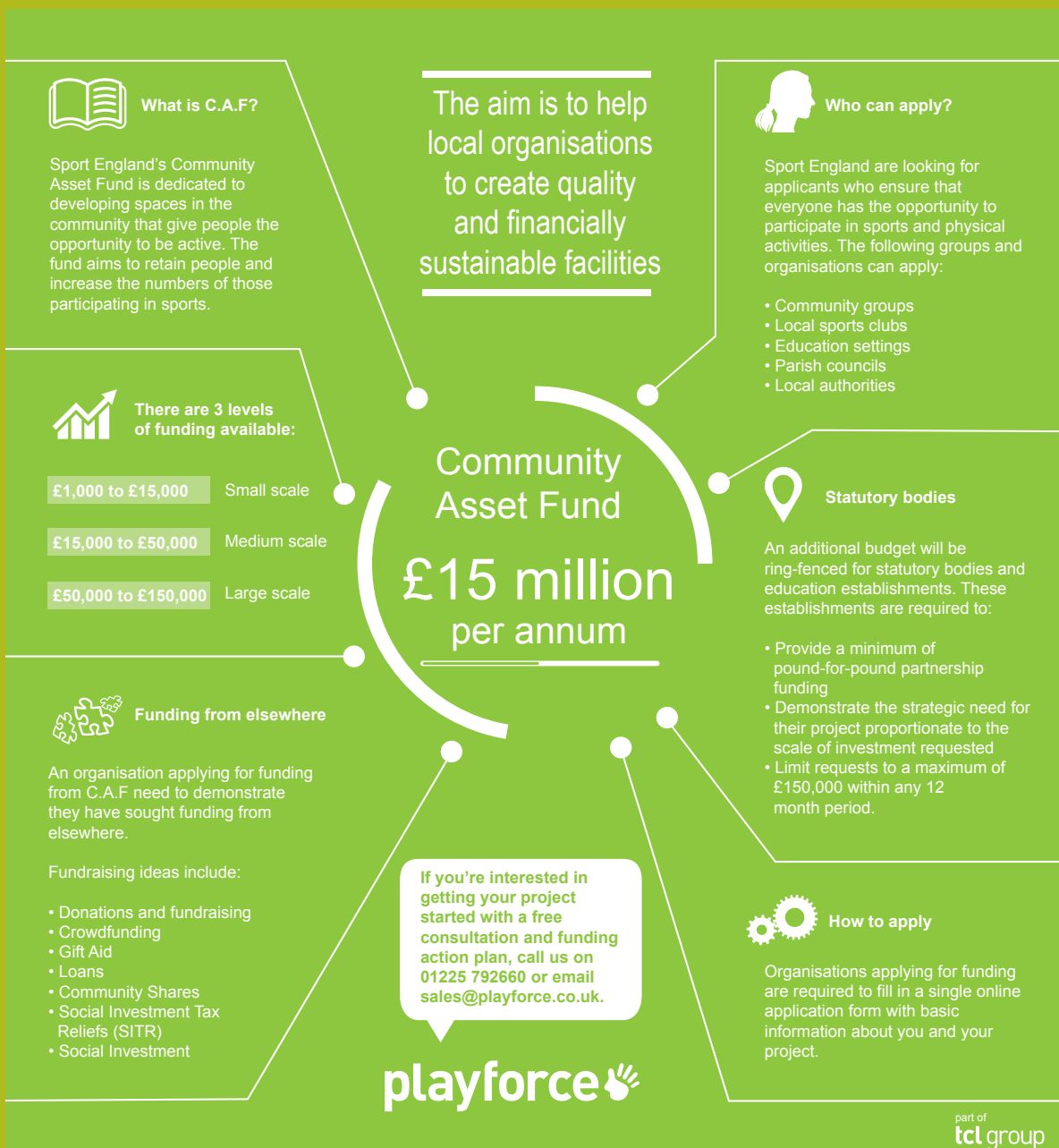
- All local authority community, foundation and voluntary-controlled schools will receive an allocation to their responsible body through a central formula which will account for pupil numbers.
- Voluntary-aided schools will also be funded in this instance as part of the local authority allocation.
- Also eligible will be MATs that currently qualify for a direct school condition capital allocation. Responsible bodies will then make spending decisions based on local context smaller MATs, single-academy trusts and sixth-form centres will be eligible to bid for funding through a new healthy pupils capital fund.

This fund has been controversial. The Department for Education launched the £415 million healthy pupils capital programme in February 2017, but later revealed that £300 million of this amount would instead be redirected into the main schools budget. Questions remain over the remaining £100 million, fuelling fears that the programme is being "abandoned". The money is set to come from the sugar tax being imposed on fizzy drinks manufacturers in 2018-19. Information on the allocation formula, spending guidance and bidding criteria will follow... but we are still waiting. The good news is, however, if/when this does turn up, you can use it to improve your play areas!



## Community Asset Fund

Sport England's Community Asset Fund is dedicated to developing spaces in the community that give people the opportunity to be active. The fund aims to retain people and increase the numbers of those participating in sports. Whilst it isn't specifically aimed at schools, if you can demonstrate that you use your outdoor space to engage with the community (proactively) and encourage community activity, you could be eligible for this. You can find out more information [here](#), or with our handy infographic.





### And that's not all...

Here are a few more grants you might want to consider, alongside those above:

- [Awards for All](#) – Schools can apply directly without charitable status and offers a simple application form and quick turnaround with no deadlines – Decision should be given within 8 weeks. Grant range from: England £300 – £10,000, Scotland & N. Ireland £300 – £10,000 Wales: £500 – £5,000.
- [St. James's Place Foundation](#) (Cherishing the children) – Aimed to improve quality of life for people as a result of disability or disadvantage.
- [Garfield Weston Foundation](#) - Includes grants to community and education projects as well as welfare - £30m grant making budget.
- [Ernest Cook Trust](#) - Supports educational and research projects. Many of the schemes it supports relate to the countryside and environmental and architectural conservation, and are all educational in emphasis. Grants range from: £100 – £3,000 in the small grants category and £3,000 – £10,000 in the main grants category.
- [Foyle Foundation](#) - An independent grant-making trust that distributes grants to UK charities. Main Grants Scheme (supporting charities whose core work covers Arts and Learning) a Small Grants Scheme (covering small charities in all fields).
- [Co-operative Community Fund](#) - The programme uses the money raised to support a range of community projects.
- [Football Foundation](#) - A partnership funded by The F.A. Premier League, The FA and the Government.
- Provides grants of between £100 and £1 million to revitalise grass roots sport, investing in schools and harnessing the power of the game within local communities to promote education and social inclusion.
- [ASDA Foundation](#) - Makes grants throughout the UK. They aim to 'transform communities' improving lives for people and communities in the UK.
- [Groundwork](#) - Groundwork works across the UK helping communities find practical solutions to the challenges they face.
- [London Community Foundation](#) - A wide range of grants for projects across London.
- [Tesco Community Champions](#) - One-off donations of between £500 and £4,000 to registered charities and not for profit organisations who are working on local projects that support children and their education and welfare, elderly people and adults and children with disabilities.
- [London Marathon Charitable Trust](#) - Uses surplus income from the London Marathon to fund the provision of high quality recreation facilities to meet the leisure needs of the community. Priority is given to projects which develop local participation in sport, recreation and play, especially in a way which encourages community development.
- [One Family Foundation](#) - The OneFamily Foundation is there to help fund community projects that really matter to their customers. Winning projects in 2017 have included outdoor gyms and outdoor saces.
- [Wooden Spoon](#) - Wooden Spoon is a charitable grant-giving organisation that funds projects across the UK and Ireland to support disadvantaged and disabled children.



## More reading

Our blog is full of resources...

- Read "[Top tips for structuring a successful bid for grant funding!](#)"
- Read "[Fundraising for your new playground... where should you start?](#)"
- Read "[We're talking to Academies about procurement best practice for their outdoor space](#)"
- Read "[Getting started with applying for grants](#)"
- Read "[Funding your new playground](#)"
- Read "[Top Tips – starting a new playground fundraising project](#)"
- Watch "[How to apply for school grants and funding](#)"
- Watch "[How to apply for Awards for All Big Lottery funding](#)"
- Watch "[Fundraising Ideas For Schools - Healthy Fundraiser](#)"
- Watch "[Foreign currency collections](#)"
- Watch "[School fundraising ideas from Children in Need](#)"
- Watch "[Make a fundraising video like this primary school](#)"
- Watch "[How to organise a sponsored walk](#)"

And if you still haven't found the information you need, we'd love to speak to you personally. [Contact us here.](#)

Here at Playforce we can also provide finance options to help spread the cost of your sports project with our partners LDF. LDF are approved by NASBM and already work with schools across the UK. For more information please [get in touch](#).

